

hergom



Cares II



Cares II

The ultimate cooker. This sleek, modern cooker has a glossy, black porcelain enamel finish and stainless steel oven with removable chrome grill plus a handy warming drawer and removable ash pan.

The ceramic top plate provides medium heat, but when lifted gives access to a hotter cast iron plate whilst the top doubles as a splash back.

Dimensions (WxDxH)	1012 x 609 x 859mm
Removable Hot Plate (WxD)	470 x 520
Oven volume	77.1 litres
Max. log length	350mm

Key Features

- ✓ Gloss black porcelain and cast iron finish
- ✓ Large capacity stainless steel oven
- ✓ Vitreous glass cook top doubles as splash back
- ✓ Double combustion system for a cleaner, more efficient burn
- ✓ Warming drawer



Pas II

This large capacity cooker has a cast iron enamelled front and chrome-plated fixtures with a cast-iron hob. The stainless steel oven includes adjustable guides for holding the tray and grill with an anti-tip system.

Dimensions (WxDxH)	1022 x 585 x 846mm
Hot Plate (WxDxH)	645 x 475mm
Oven volume	75.36 litres
Max. log length	300mm

Key Features

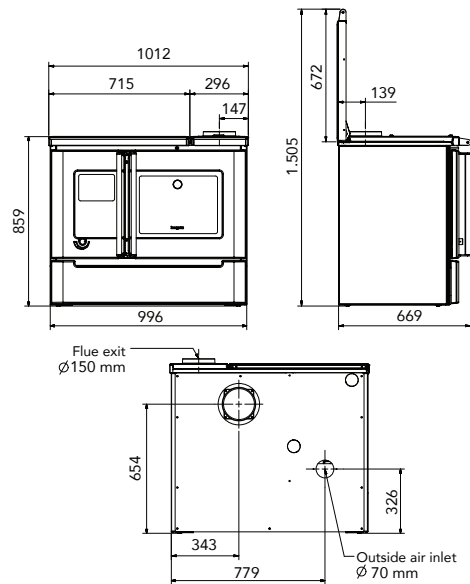
- ✓ Cast iron doors and front with gloss black porcelain enamel finish
- ✓ Large capacity stainless steel oven
- ✓ Double combustion system for a cleaner, more efficient burn
- ✓ Removable ash pan for easy cleaning

Dimensions, Specifications and Clearances

CARES II

Dimensions

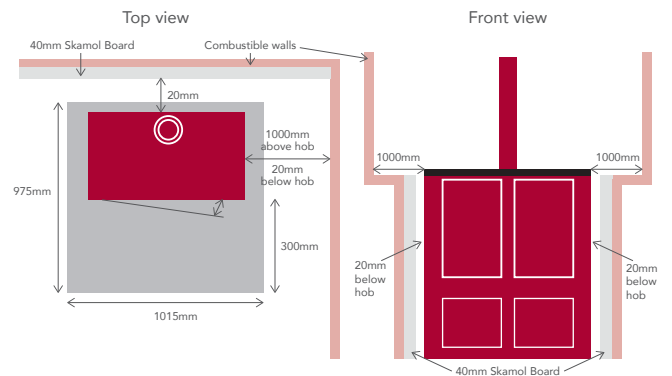
Dimensions (WxDxH) mm	1012 x 609 x 859 Depth 673mm with towel rail holder Height 1503mm with hot plate cover open
Weight	225kg
Maximum log length	350mm
Removable Hotplate (WxD) mm	470 x 520
Simmer Griddle (WxD) mm	210 x 310
Main Oven (WxDxH) mm	450 x 445 x 385
Main Oven Volume	77.1 litres
Firebox Dimensions (WxDxH) mm	258 x 438 x 330
Flue exit top/rear dimension	ø150mm
Rear Flue centre to floor	654mm
Top Flue centre to back	140mm



Clearances

Clearances based on installation of a 6" Triple Skin Flue Kit with 8" solid casing

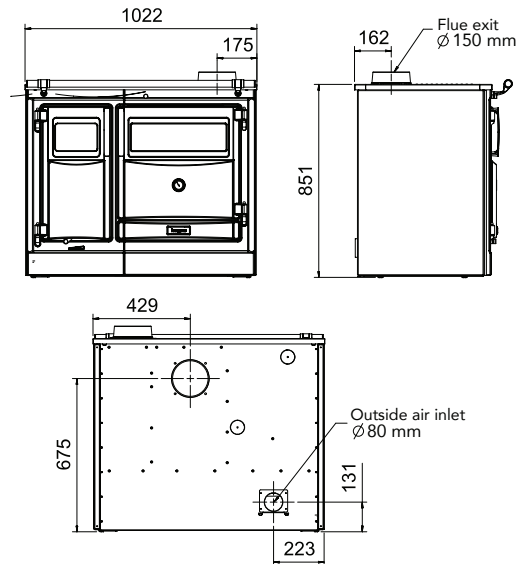
Rear	60mm (includes 40mm skamol wall)
LH Above Hob	1000mm
RH Above Hob	1000mm
LH Below Hob	60mm (includes 40mm skamol wall)
RH Below Hob	60mm (includes 40mm skamol wall)
Hearth Dimensions	A minimum 975mm (d) x 1215mm (w) x 18mm thick floor protector (compressed board) should be used under and in front of the appliance base when installing the appliance. The floor protector should extend 300mm in front of the appliance door and be placed 200mm to the left of the fuel loading.



PAS II

Dimensions

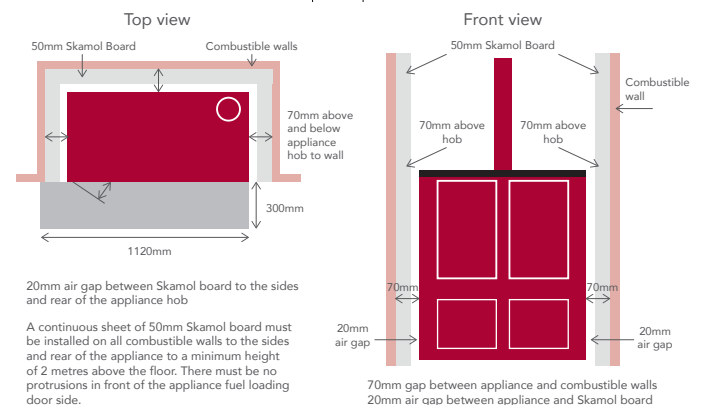
Dimensions (WxDxH) mm	1022 x 585 x 846 Depth 695mm with towel rail holder
Weight	265kg
Maximum log length	300mm
Hotplate (WxD) mm	645 x 475
Simmer Griddle (WxD) mm	265 x 290
Main Oven (WxDxH) mm	450 x 420 x 385
Main Oven Volume	75.36 litres
Firebox Dimensions (WxDxH) mm	310 x 450 x 375
Flue exit top/rear dimension	ø150mm
Rear Flue centre to floor	675mm
Top Flue centre to back	162mm



Clearances

Clearances based on installation of a 6" Triple Skin Flue Kit with 8" solid casing

Rear	70mm (includes 50mm skamol wall)
LH Above Hob	70mm (includes 50mm skamol wall)
RH Above Hob	70mm (includes 50mm skamol wall)
LH Below Hob	70mm (includes 50mm skamol wall)
RH Below Hob	70mm (includes 50mm skamol wall)
Hearth Dimensions	The appliance must be installed on a non-combustible hearth. The forehearth floor protector should extend 300mm in front of the appliance fuel loading door and be 1120mm (w) x 12mm thick (Bellis Board) placed 100mm to the left of the side of the fuel loading door.





hergom

Commitment to quality

Hergom controls and guarantees the entire production process of their cooking appliances, including design, castings and the finished product. Hergom uses the finest raw materials and high quality components to guarantee exceptional performance and reliability.

Cooking with wood

Cooking with firewood provides the aromas and flavours of past times when dishes were prepared without haste, often over slow heat to produce the most authentic flavours.

With Hergom woodburning cookers those times are no longer lost, and whilst the design of the stove has advanced the essence has not.

High capacity ovens

The large stainless steel ovens can accommodate a range of cookware so what you cook is only limited by your imagination.

Combustion air control

Cookers feature a primary air control to regulate air intake and burn rate. A draft control also helps in the choice of cooking mode.

Enamel Finish

The porcelain enamel finish is hard wearing and provides an anti-stick coating meaning the surfaces are easier to clean and stay protected.



castworks
home heating specialists

DISTRIBUTORS
FOR



Your Hergom dealer

The information contained in this brochure is to assist you in your choice of a suitable fire. It is not intended to be all the information required to install the fire and does not replace the installation manual which provides more detailed information. In the interest of product development Hergom reserves the right to change specifications without prior notice.